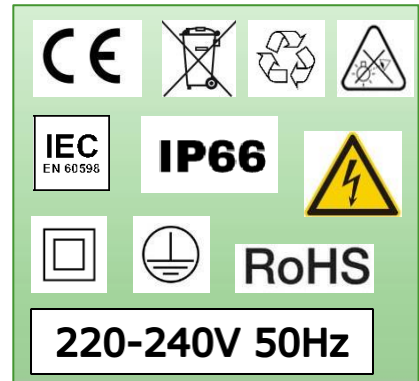
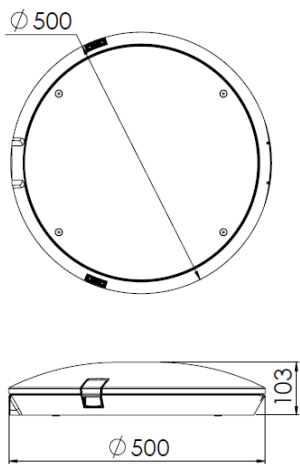
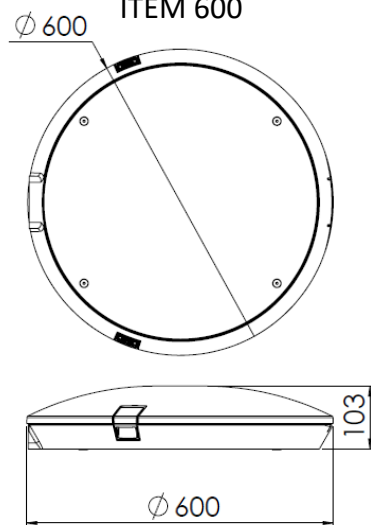
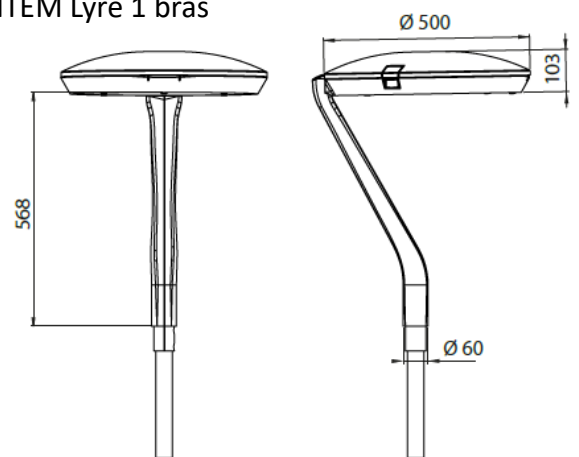
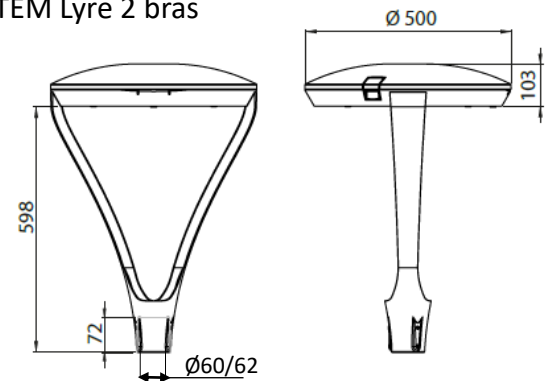
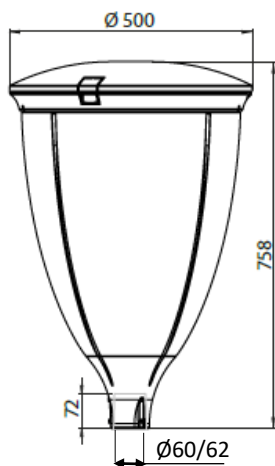
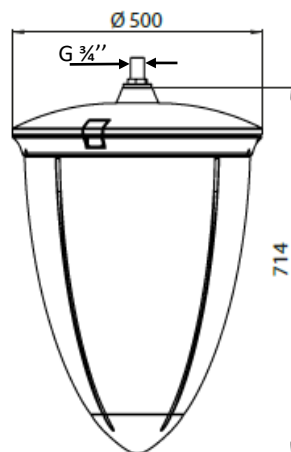
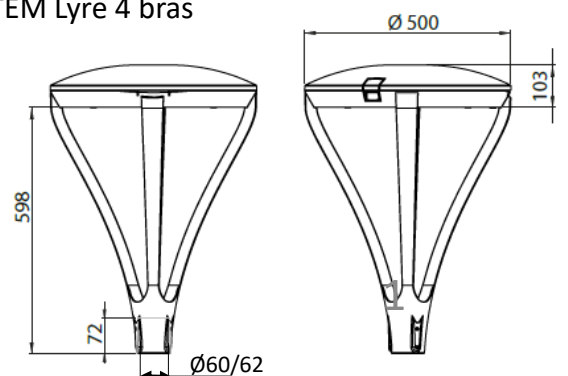
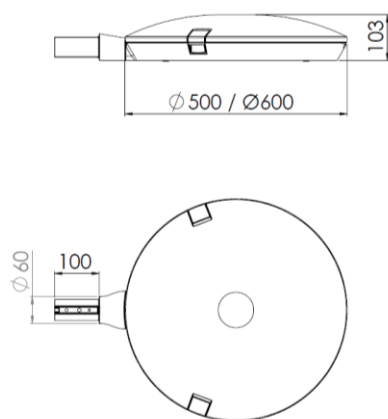


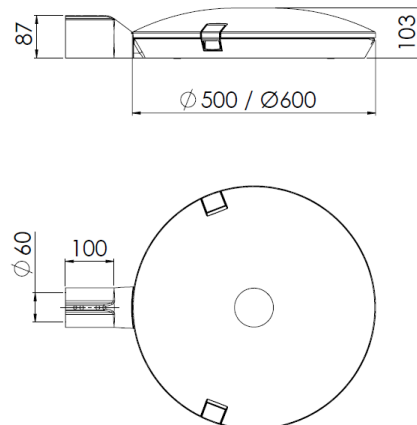
ITEM	IK	kg	SCx	Hmax
500	09	9,7 kg	0,04 m <sup>2</sup>	12 m
600	08	12,2 kg	0,05 m <sup>2</sup>	12 m
1 bras	09	10,3 kg	0,06 m <sup>2</sup>	12 m
2 bras	08	12,1 kg	0,07 m <sup>2</sup>	12 m
4 bras	09	12,4 kg	0,10 m <sup>2</sup>	12 m
PHC Porté	10	11 kg	0,19 m <sup>2</sup>	12 m
PHC Suspendu	10	11,1 kg	0,19 m <sup>2</sup>	12 m


**ITEM 500**

**ITEM 600**

**ITEM Lyre 1 bras**

**ITEM Lyre 2 bras**

**ITEM vasque PHC porté**

**ITEM vasque PHC suspendu**

**ITEM Lyre 4 bras**


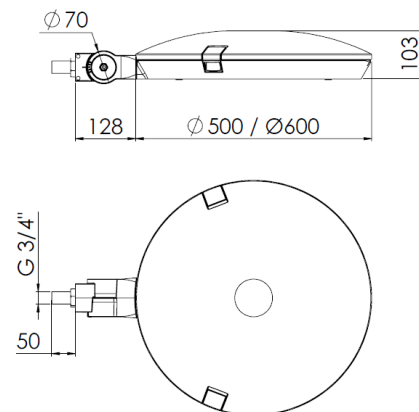
# LL



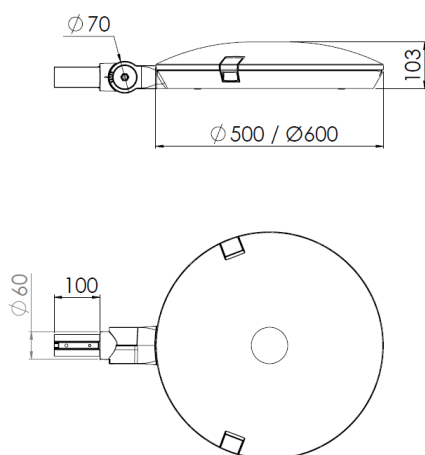
# LLM 60



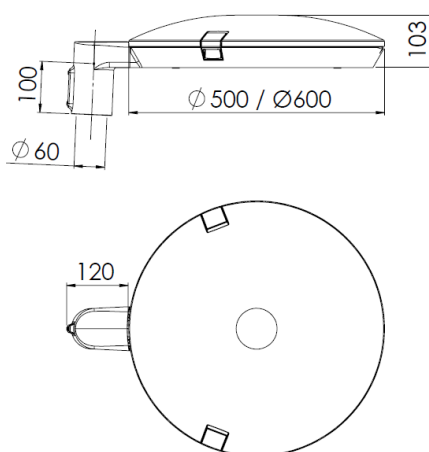
# LR



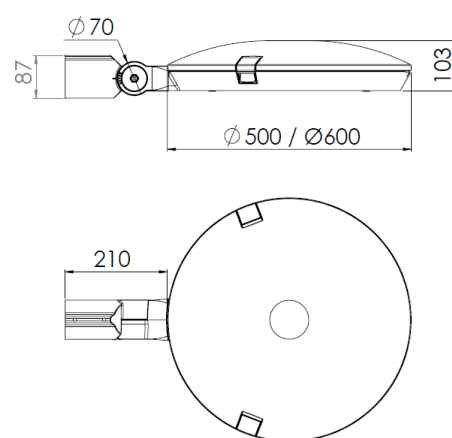
# LRL



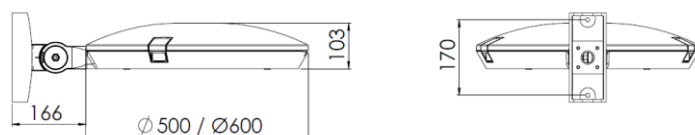
# TOP



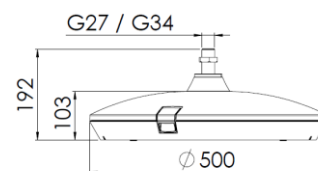
# LTO 60



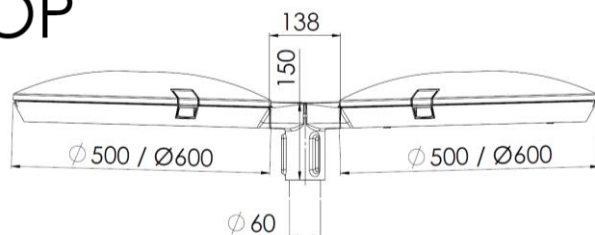
# APPLIQUE / PATIN



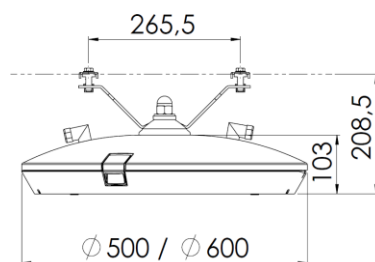
# SM



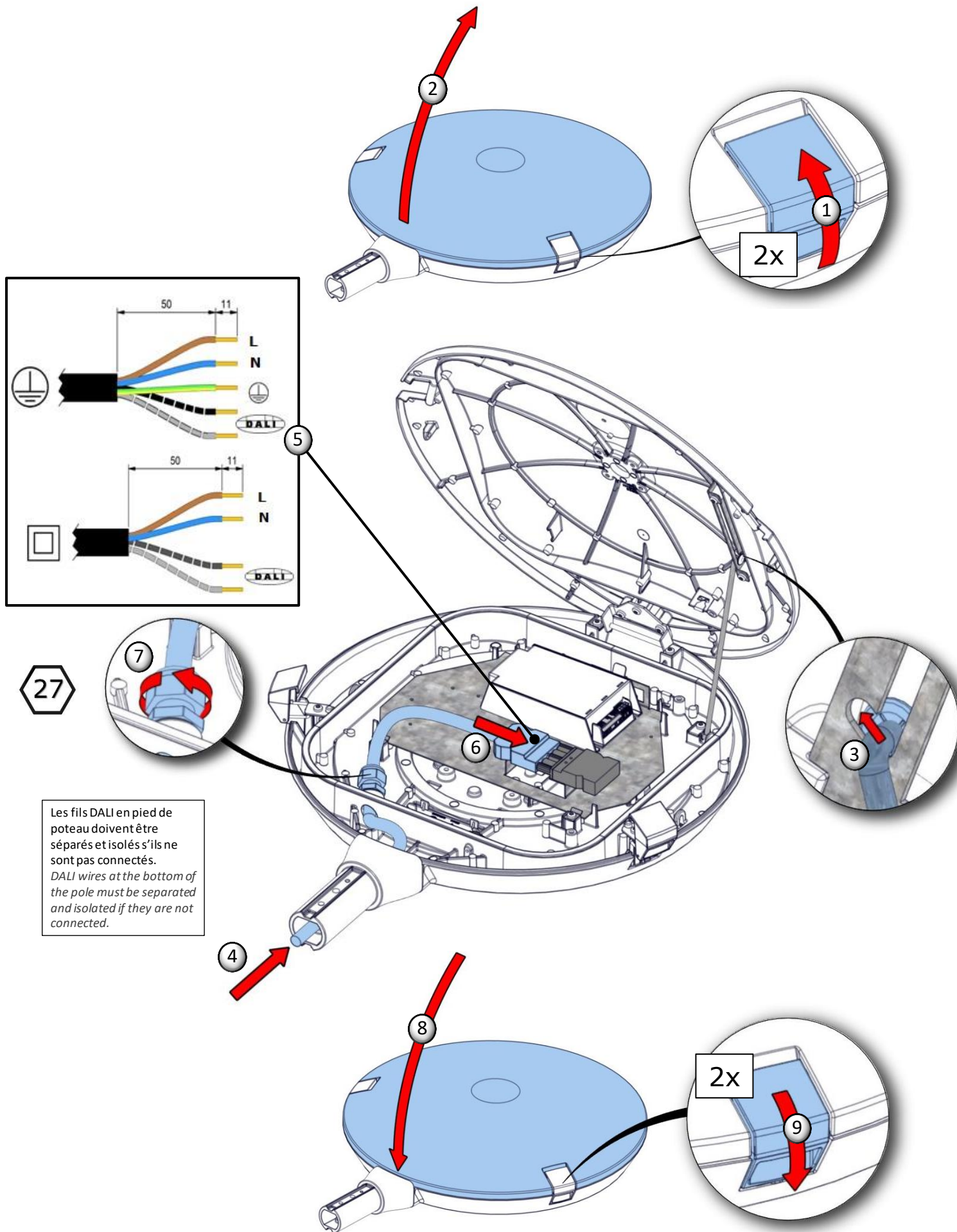
# BI-TOP



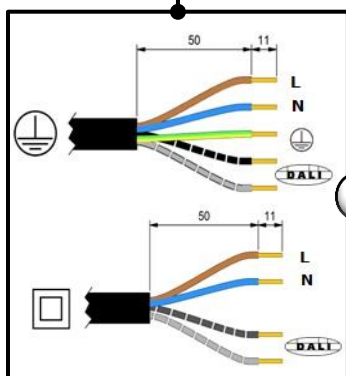
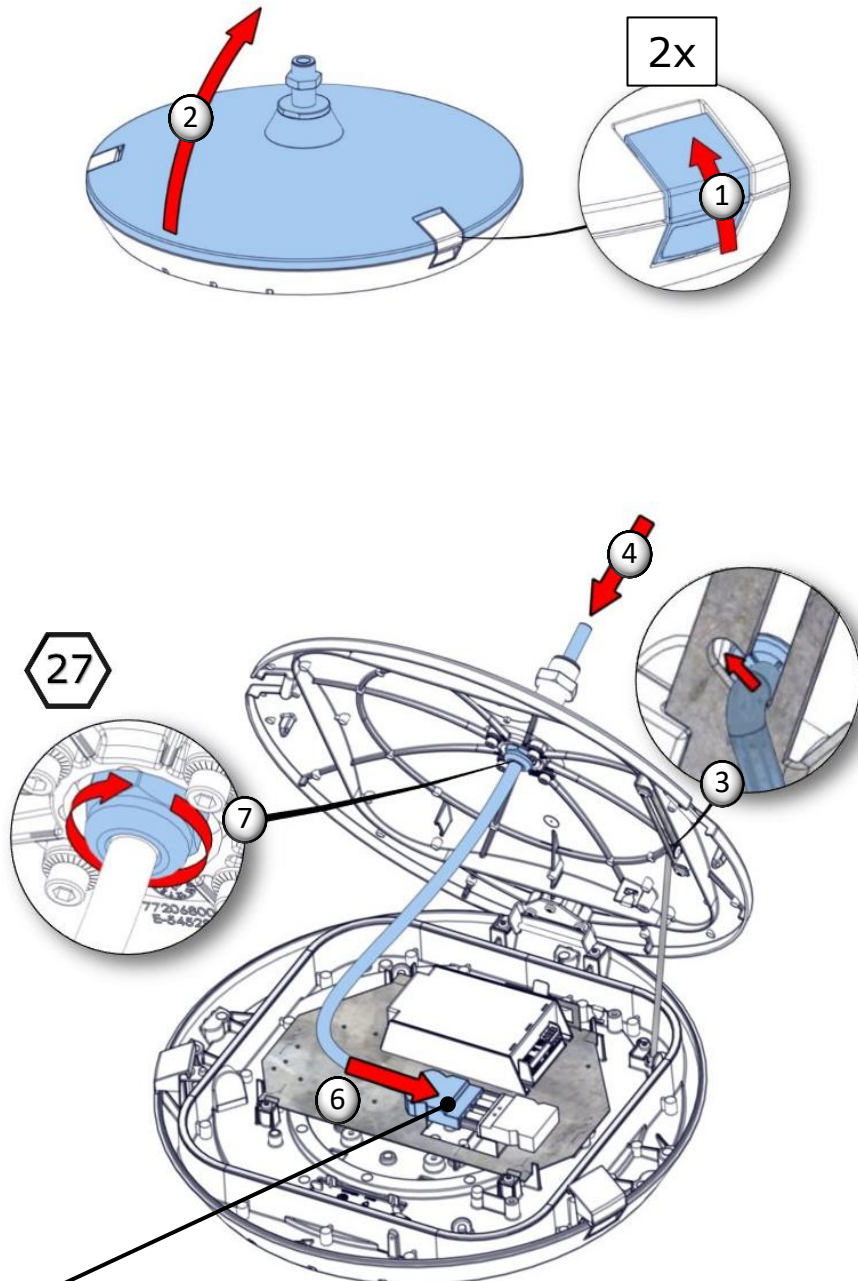
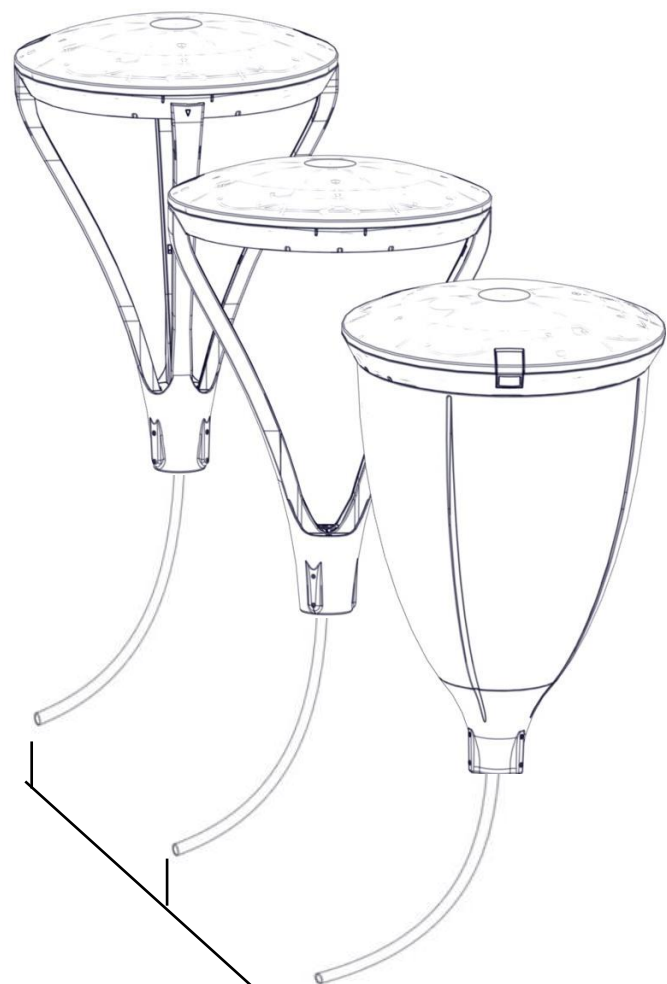
# SCO



La source lumineuse contenue dans ce luminaire ne doit être remplacée que par le fabricant ou son agent de maintenance ou une personne de qualification équivalente.  
The lighting part included in this luminaire must be maintained by the manufacturer, an authorized service agent or a person with similar technical qualification.  
Die in der Leuchte beinhalten Lichtquelle soll nur durch den Hersteller oder seinen Wartungsfachmann oder einen Servicetechniker mit einer ähnlichen Qualifikation ersetzt werden.

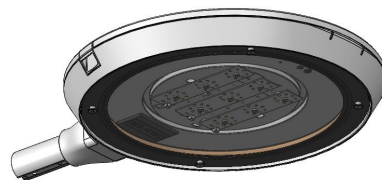






Les fils DALI en pied de poteau doivent être séparés et isolés s'ils ne sont pas connectés.  
DALI wires at the bottom of the pole must be separated and isolated if they are not connected.

La source lumineuse contenue dans ce luminaire ne doit être remplacée que par le fabricant ou son agent de maintenance ou une personne de qualification équivalente.  
The lighting part included in this luminaire must be maintained by the manufacturer, an authorized service agent or a person with similar technical qualification.  
Die in der Leuchte beinhaltene Lichtquelle soll nur durch den Hersteller oder seinen Wartungsfachmann oder einen Servicetechniker mit einer ähnlichen Qualifikation ersetzt werden.

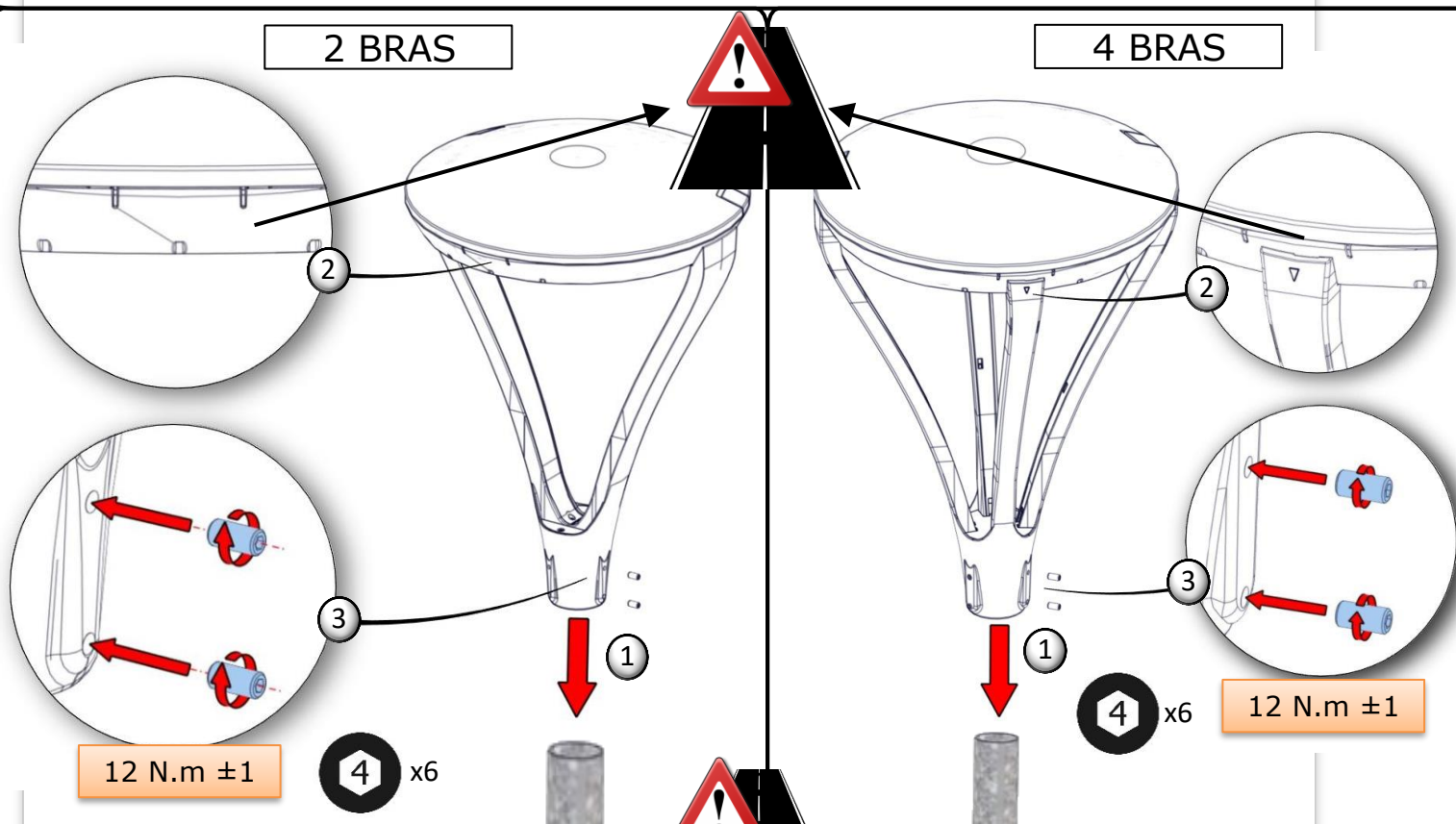


## Interfaces mécaniques

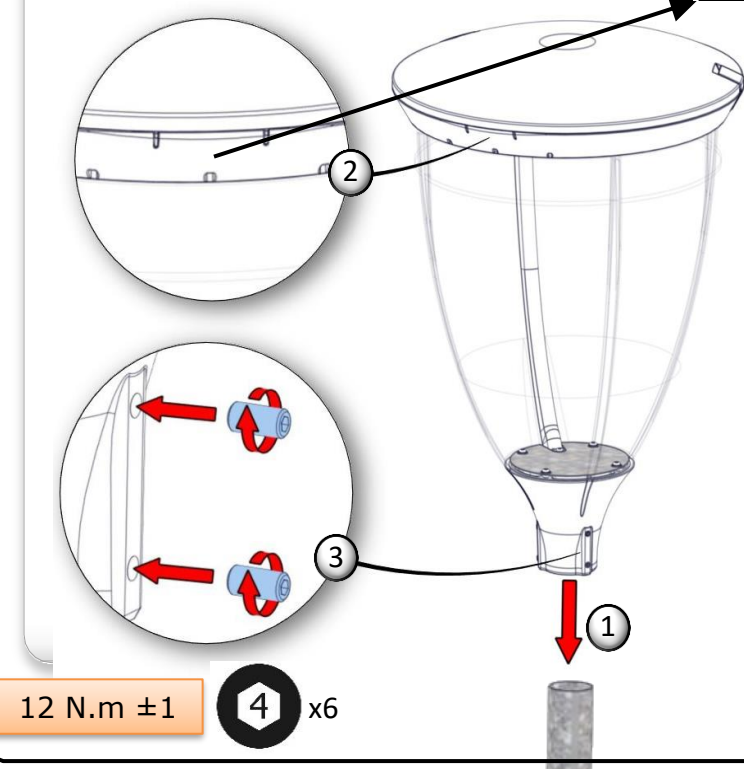
2 BRAS ; 4 BRAS ; PORTE VASQUE HAUTE ; SUSPENDU VASQUE HAUTE

2 BRAS

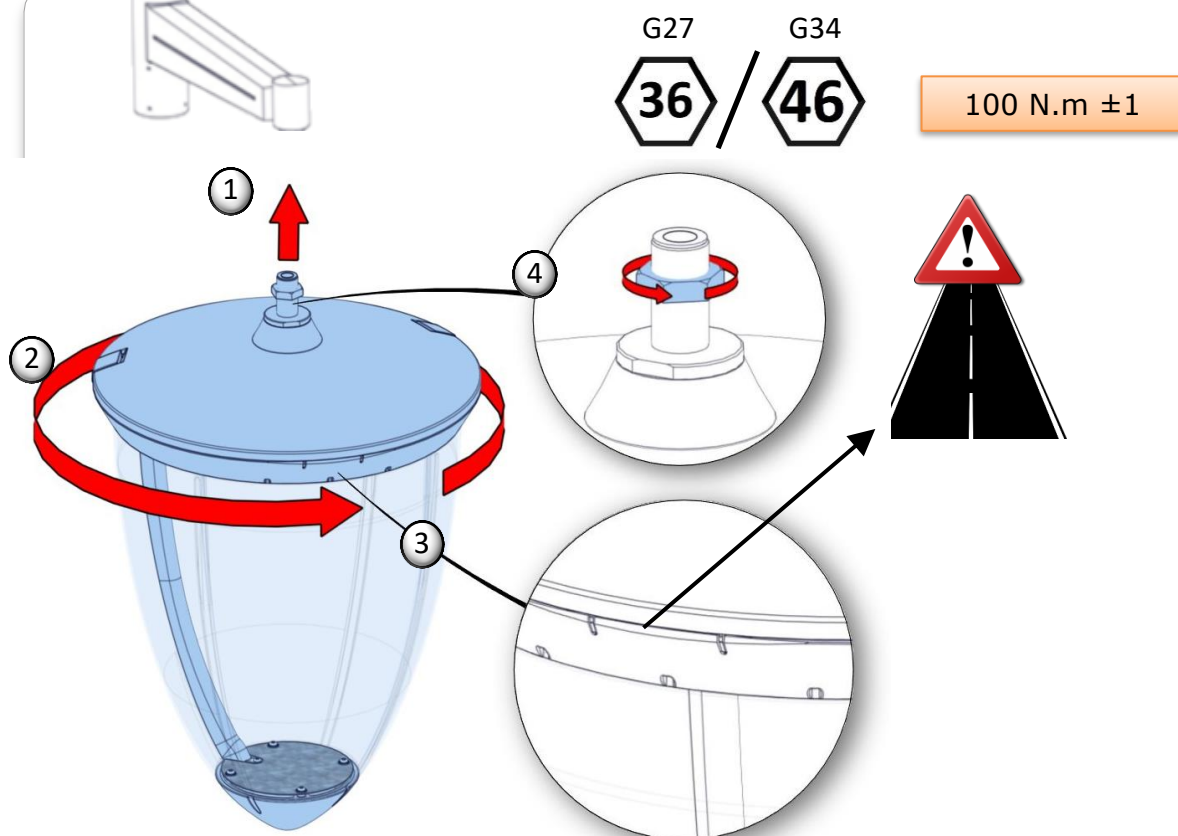
4 BRAS



PORTE VASQUE HAUTE



## SUSPENDUE VASQUE HAUTE



Autres notices et modes opératoires



La source lumineuse contenue dans ce luminaire ne doit être remplacée que par le fabricant ou son agent de maintenance ou une personne de qualification équivalente.  
The lighting part included in this luminaire must be maintained by the manufacturer, an authorized service agent or a person with similar technical qualification.  
Die in der Leuchte beinhaltene Lichtquelle soll nur durch den Hersteller oder seinen Wartungsfachmann oder einen Servicetechniker mit einer ähnlichen Qualifikation ersetzt werden.